



Memorandum

Page 1 of 1

DATE: May 9, 2023

PROJECT: 2100178 – Beaverton-HS

SUBJECT: Temporary Modular Installation
Stormwater Management

This memo serves to discuss the proposed addition of temporary modular structures and associated utilities that will serve students during the construction of the proposed high school project. The existing parking lot drains northwest to a 100-foot vegetated water quality swale constructed in 2001. Runoff exits the swale through an existing ditch inlet and flows to an existing water quality manhole, ultimately entering Erickson Creek.

Based on as-built drawings, the existing swale conforms to the minimum length, minimum slope, minimum bottom width, the addition of river run rock and planting requirements as specified in Clean Water Services Design and Construction Standards, 2019. Visual inspection of the swale shows it to be in good condition, with healthy vegetation and mature trees. Given the temporary use condition, we believe that this swale and accompanying water-quality manhole will be adequate in providing treatment for the modular installation project.

For the purposes of a hydromodification fee in lieu, this project will include 1,833 square feet of modified impervious area.

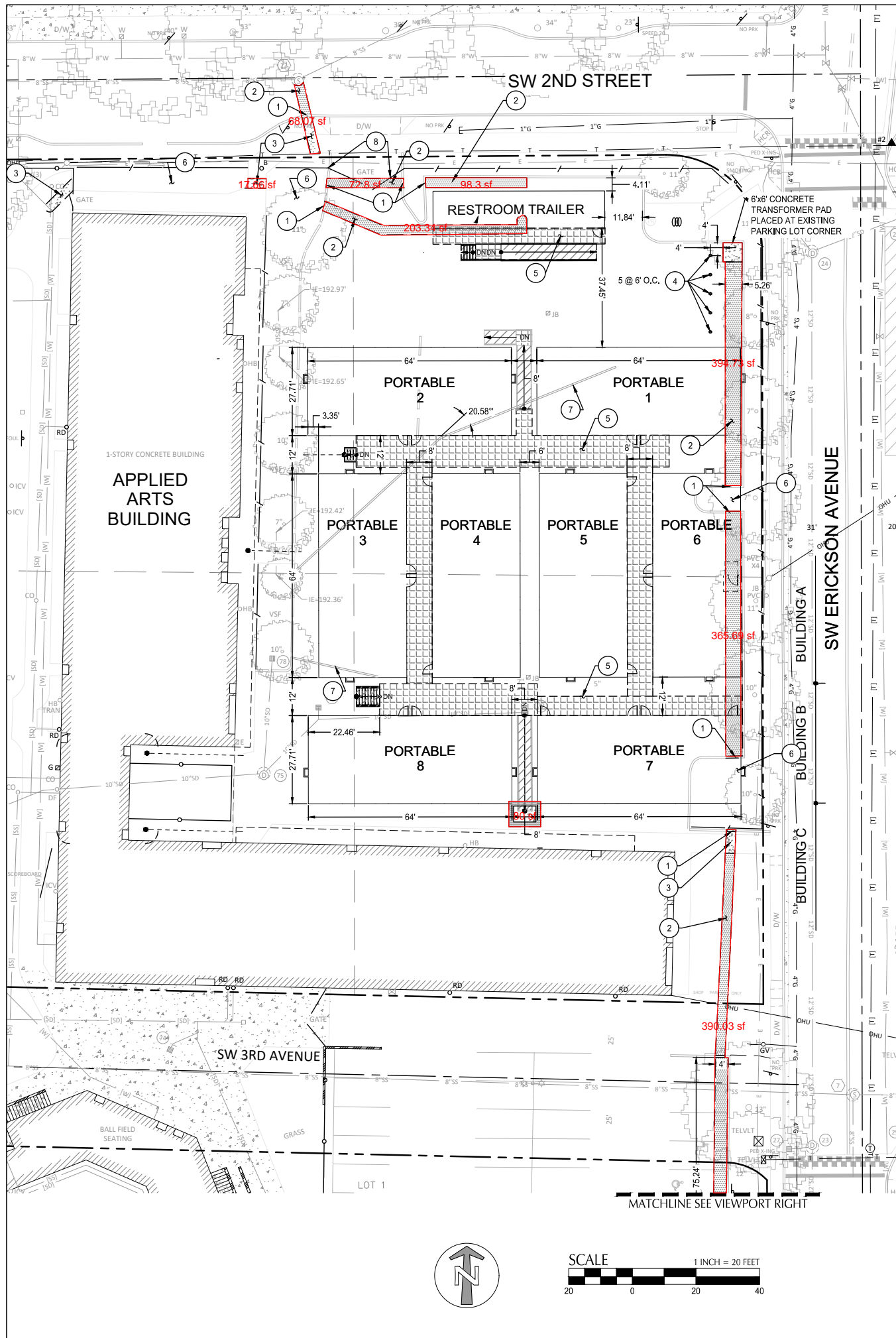
Sincerely,
KPFF Consulting Engineers

A handwritten signature in blue ink, appearing to read 'Danielle Pruett'.

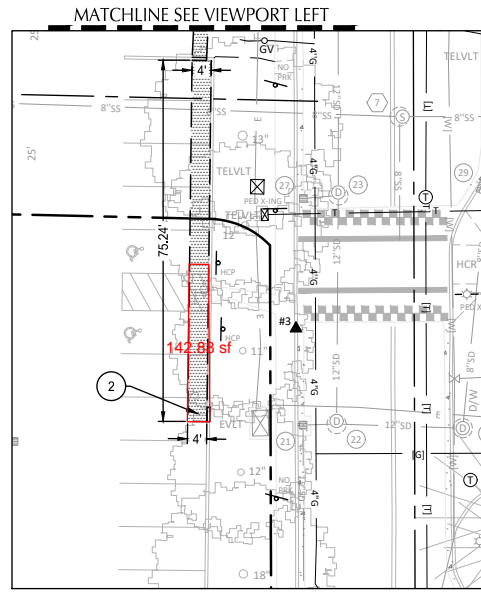
Danielle Pruett, PE, CPESC
Associate

Attachments: Exhibit – Storm Takeoff

10102100178-pm



Impervious	
Basin	Basin Area (sf)
1	18
2	68
3	73
4	98
5	203
6	394
7	366
8	80
9	390
10	143
Total:	1,833



SHEET NOTES

- 1: ALL DIMENSIONS ARE TO FACE OF CURB OR FACE OF WALL.
2. PARKING LOT STRIPING NOT SHOWN FOR CLARITY. STRIPING TO REMAIN.
3. REPLACE ALL PAVEMENT, CURBS, DRIVEWAYS, SIDEWALKS, AND LANDSCAPING TO SURROUNDING GRADE

KEY NOTES

#:	DESCRIPTION	DETAIL REF.
1	REPLACE CURB	1/C2.0
2	REPLACE PAVEMENT	2/C2.0
3	REPLACE CONCRETE SIDEWALK	3/C2.0
4	INSTALL NEW 6" BOLLARD	4/C2.0
5	SEE ARCHITECTURAL PLANS FOR MORE INFORMATION ON RAISED WALKWAYS, ACCESS STEPS, HANDRAILS AND RAMPS	
6	REPLACE LANDSCAPING.	
7	ASPHALT BERM. SEE C4.0 FOR MORE INFORMATION	5/C2.0
8	REINSTALL GATE	

SHEET LEGEND

- SAWCUT LINE
- BERM DRAIN LINE
- [Grid Pattern] RAISED WALKWAY
- [Diagonal Lines] ALUMINUM RAMP/LANDING
- [Dotted Pattern] PAVEMENT
- [Stippled Pattern] CONCRETE SIDEWALK

revisions	

phase	PERMIT
date	5/5/2023
project	21016
MODULAR SITE IMPROVEMENT & HORIZONTAL CONTROL PLAN	